



Pulling the Curtain on Airport Security

Billy Rios

Xssniper@gmail.com

@xssniper

How to get put on the no-fly list...

Why are you doing this?

- Just an average Joe
- Interest in ICS, Embedded and Medical devices
- I travel a lot





Lessons Learned by a Young Butterbar

- Show respect
- Accept Responsibility
- Trust, but Verify

Show me the Money... (budget.house.gov)

- > 50,000 people at more than 400 airports across the country and an annual budget of \$7.39 billion (2014)
- TSA receives about \$2 billion a year in offsetting collections under current law, through air-carrier and aviation-passenger security fees. The largest of the fees, in terms of total collections, is the Aviation Passenger Security Fee (sometimes called the September 11th Security Fee), which brings in about \$1.7 billion a year.
- By law, the first \$250 million of passenger-security fees is set aside for the Aviation Security Capital Fund, which provides for airport-facility modifications and certain security equipment

Show me the Money...

One guy

no budget

and a laptop

Disclosure

All issues in this presentation were reported to DHS
via ICS-CERT >6 months ago

Response?

- Our software “cannot be hacked or fooled”
- “add their own software and protections.”
- <silence>
- Spoke with Morpho last week

Scenarios

- (1) TSA doesn't know about the security issues in their software
- (2) TSA knew about the security issues, developed their own custom fixes, never told the vendors... and is hoarding embedded zero day vulnerabilities and leaving other organizations exposed?







Recommended Security Guidelines for Airport Planning, Design and Construction



Transportation
Security
Administration

Revised: May 2011



Transportation
Security
Administration

CHECKPOINT DESIGN GUIDE (CDG)
Revision 4.0
August 29, 2012

Prepared for the
Transportation Security Administration (TSA)
Office of Security Capabilities (OSC)

Prepared by:

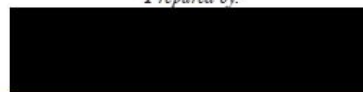
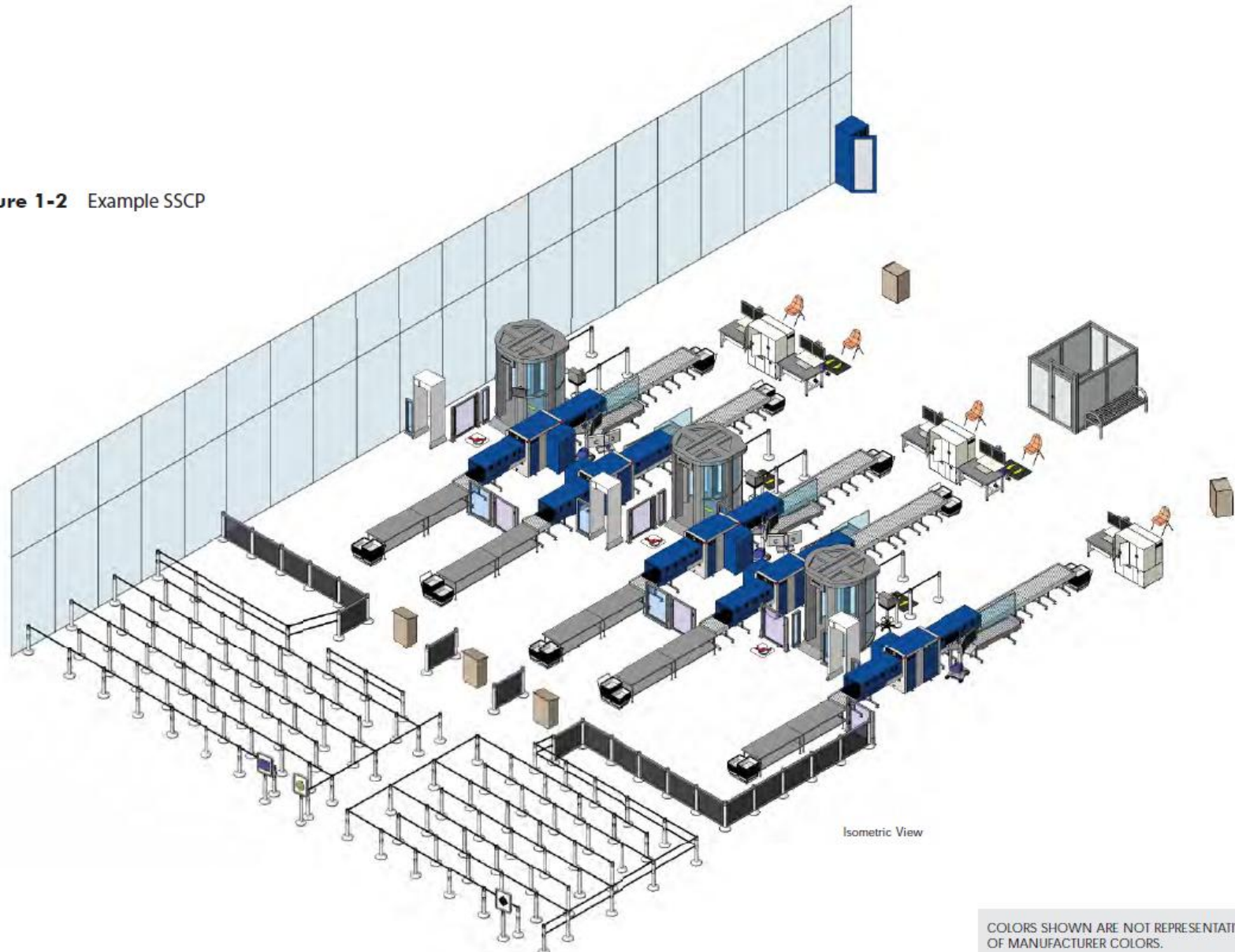


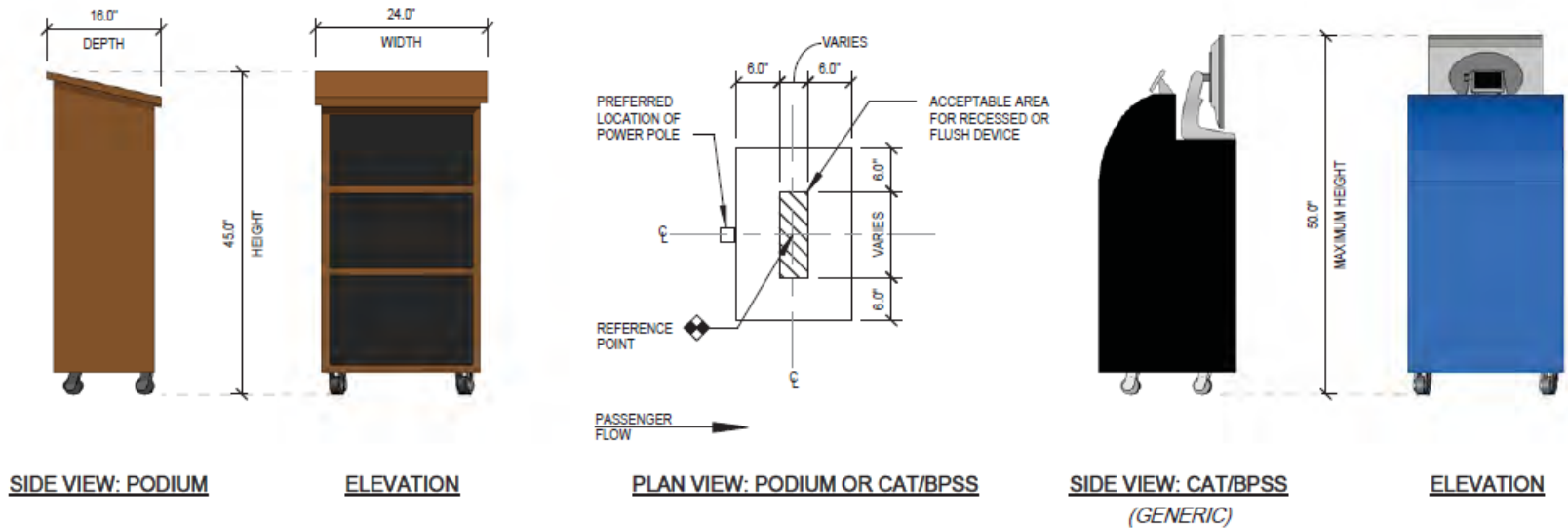
Figure 1-2 Example SSCP



COLORS SHOWN ARE NOT REPRESENTATIVE OF MANUFACTURER COLORS.

Figure 2-8 TDC Podium & CAT/BPSS

Equipment	Quantity	Power Requirements	IT Requirements	Additional Information
TDC Podium CAT/BPSS (generic)	1 per 2 lanes +1 for odd numbered lanes +1 if checkpoint feeds international flights	<ul style="list-style-type: none"> • Non-dedicated • 20A, 125V, 180VA/podium • 2-Pole, 3-Wire Grounding • NEMA 5-20R Duplex Receptacle • Power cord length is unknown at the time of this printing 	<ul style="list-style-type: none"> • Data Drops = 2 • Cat5e / Cat6 cable • The cable length from the termination point in the IT cabinet to the data outlet in the work area shall not exceed 295'. • If data drop cannot be secured when the checkpoint is closed, a locking device is required. Coordinate with TSA HQ IT Security. 	<ul style="list-style-type: none"> • The TDC function can be supported by either a TDC Podium or a CAT/BPSS. • The CAT/BPSS may be on wheels or it may sit on floor.



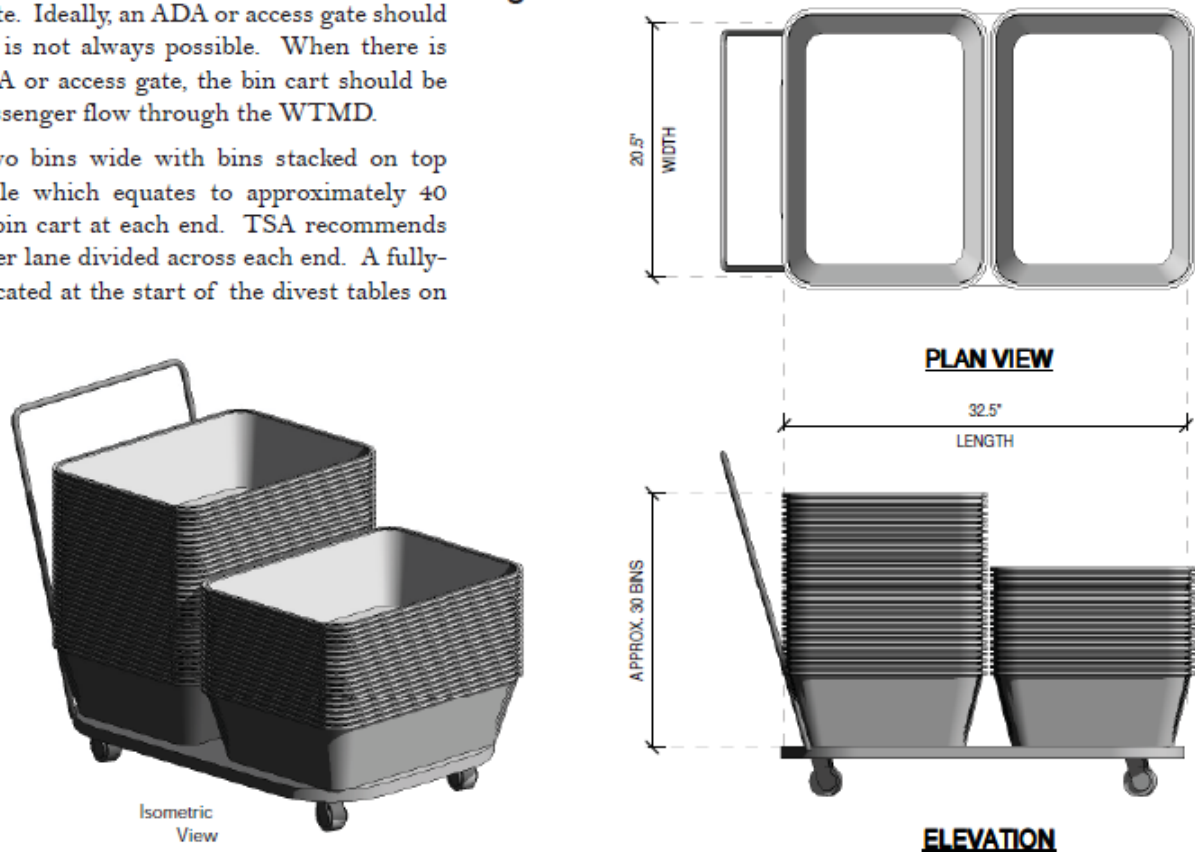
2.3 BIN CART

Bins are the gray containers located on a cart at the front and back of each checkpoint lane. Passengers use bins to divest themselves of their personal belongings such as purses, carry-on bags, backpacks, laptops, shoes, jackets, etc. Bin carts are similar to a hand cart or dolly that allows for the transport of a large number of bins without requiring excessive lifting or carrying by a TSA agent. In the past, bin transport by the TSOs was the primary cause of on-the-job injuries at checkpoints. Hand-carrying of bins is no longer endorsed by TSA. TSA recommends that bin carts be pushed upstream through an ADA or access gate. Ideally, an ADA or access gate should exist at every lane but this is not always possible. When there is insufficient space for an ADA or access gate, the bin cart should be pushed upstream against passenger flow through the WTMD.

Bin carts can be one or two bins wide with bins stacked on top to slightly below the handle which equates to approximately 40 bins. Each lane requires a bin cart at each end. TSA recommends maintaining about 60 bins per lane divided across each end. A fully-loaded bin cart should be located at the start of the divest tables on

the non-sterile side of the lane for passenger pick-up. The other bin cart should be positioned at the end of the composure rollers on the sterile side so that the TSA agent can collect empty bins after passengers have picked up their belongings. Refer to [Figure 2-9](#) for bin cart dimensions. The bin cart width times two should be factored into the overall length of the checkpoint lane when designing a new checkpoint or reconfiguring an existing checkpoint.

Figure 2-9 Bin Cart



ETD



GE IonTrack Itemiser
Isometric View



GE IonTrack Itemiser³
Isometric View



Smiths IonScan 400B
Isometric View



Smiths IonScan 500DT
Isometric View

BLS



CEIA EMA-MS
Isometric View



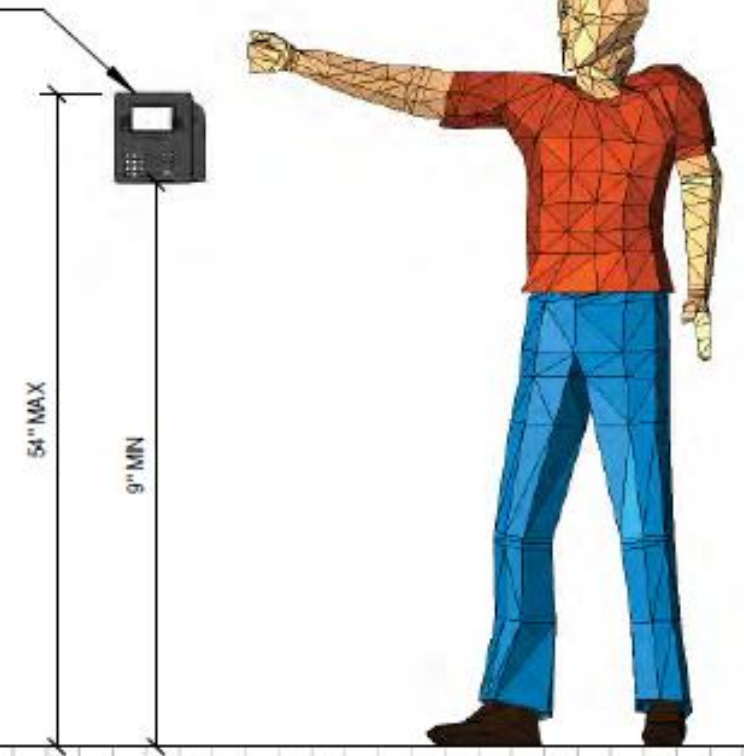
Smiths Responder RCI
Isometric View

Transportation
Security
Administration

2012.08.29 REVISION 4.0

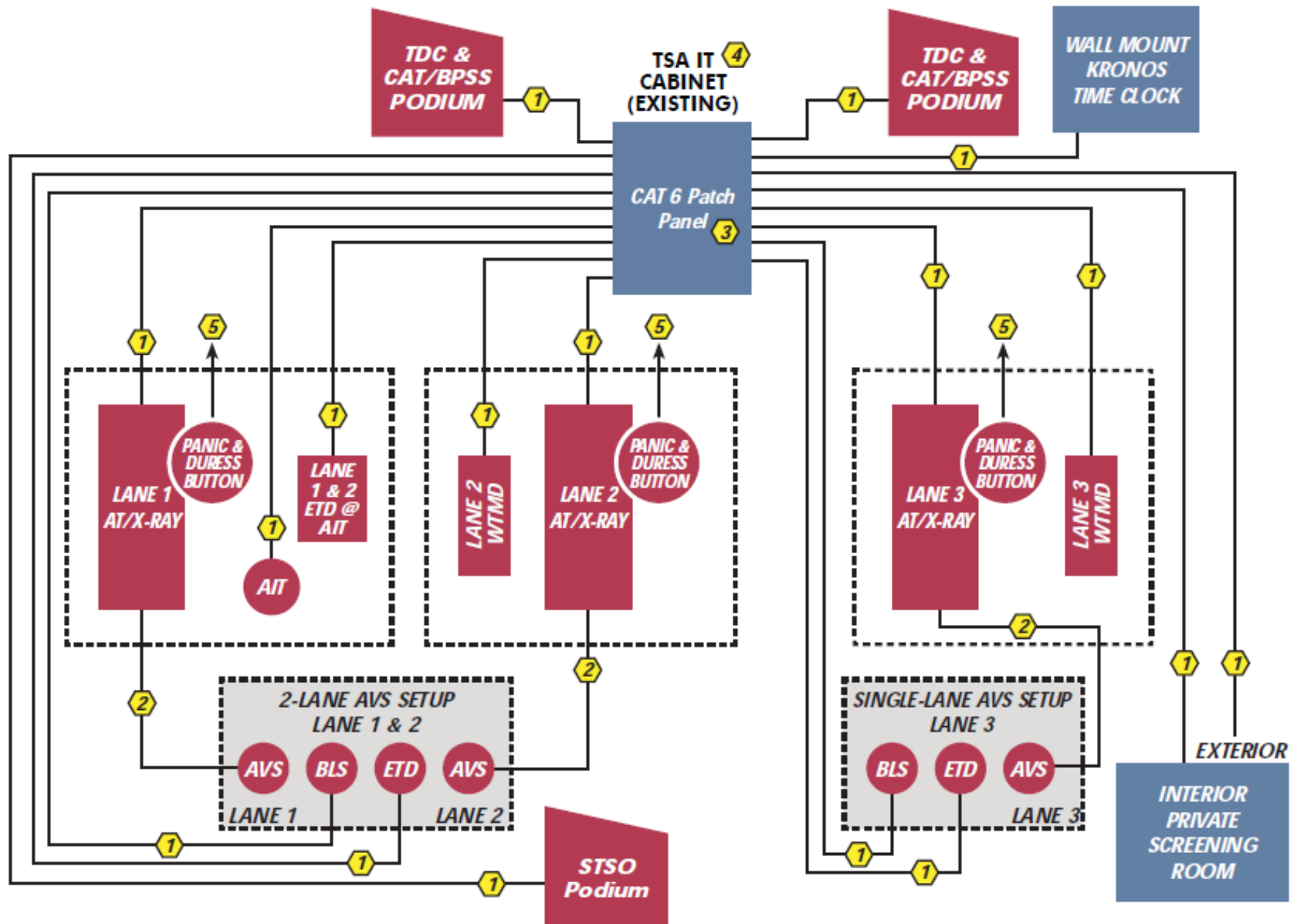
CHEC

KRONOS TERMINAL MOUNTED
OVER LAN PORT AND SECURED
FLUSH ON WALL WITH NO
EXPOSED CABLING



IT Requirements	Additional Information
<ul style="list-style-type: none">• Data Drops = 2• Cat5e / Cat6 cable• The cable length from the termination point in the IT cabinet to the data outlet in the work area shall not exceed 295'.• If data drop cannot be secured when the checkpoint is closed, a locking device is required. Coordinate with TSA HQ IT Security.	<ul style="list-style-type: none">• The TDC function can be supported by either a TDC Podium or a CAT/BPSS.• The CAT/BPSS may be on wheels or it may sit on floor.

Figure 4-1 SSCP Data Connectivity Diagram





**Homeland
Security**

IT Program Assessment

TSA- Security Technology Integrated Program (STIP) (2010)

Review

The DHS Chief Information Officer conducted a comprehensive program review of the TSA - Security Technology Integrated Program (STIP) on April 15, 2010. The STIP program, a joint effort co-funded by the Passenger Screening Program (PSP) and Electronic Baggage Screening Program (EBSP), is a TSA-wide Enterprise system that delivers data from passenger and baggage screening security technologies (in a common format) in order to facilitate data interchange/exchange through a single network for effective communication and metrics reporting. STIP has Enterprise Management, Configuration Management, Resource Management and Equipment Maintenance capabilities.

TSANET

Category X Airports



A Quick Lesson on Backdoors



I can't believe it, Jim. That girl's standing over there listening and you're telling him about our back doors?

Yeah, but your giving away our best tricks!



[Yelling] Mr. Potato Head! Mr. Potato head! Backdoors are not secrets!

They're not tricks!

A Word About Backdoors

- Malicious account added by a third party
- Debugging accounts that someone forget to remove
- Accounts used by Technicians for Service and Maintenance

Technician Accounts == Backdoors

- Often hardcoded into the software
- Applications which depend on the passwords
- Business process which depend on passwords
- External software which depend on passwords
- Training which train technicians to use these passwords

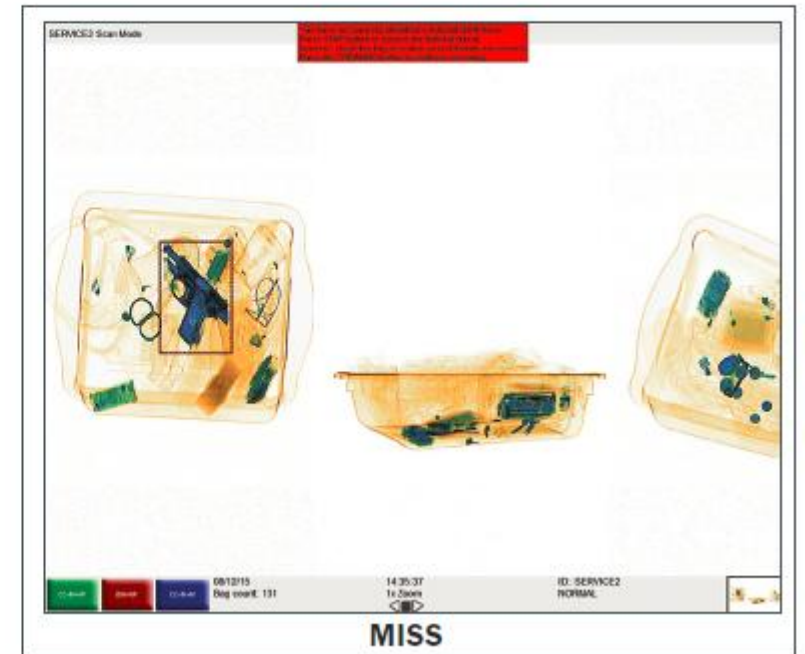
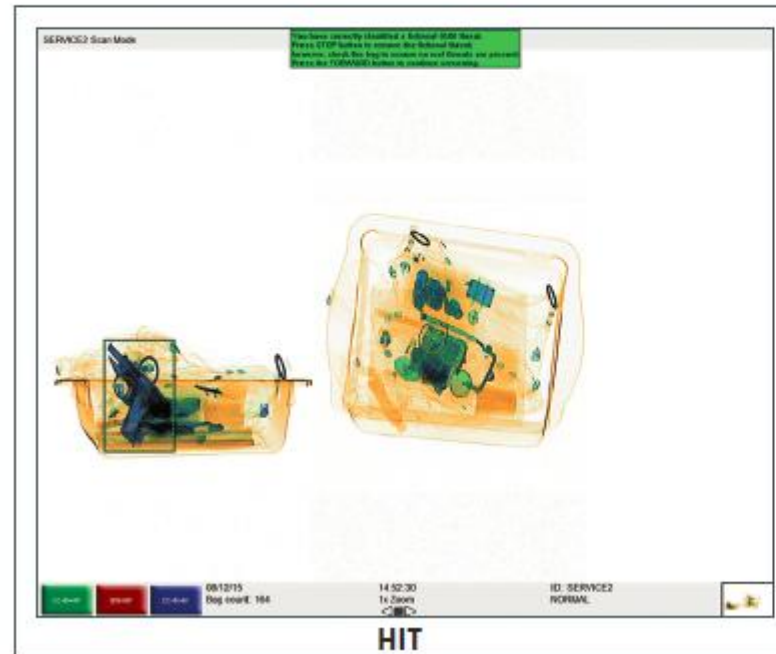
Technician Accounts == Backdoors

- Can be discovered by external third parties (like me!)
- Cannot be changed by the end user (in most cases)
- Once initial work is completed, these passwords usually scale



Rapiscan 522B

—RAPISCAN THREAT IMAGE PROJECTION—





Microsoft
Windows 98



Copyright © 1985-2001
Microsoft Corporation

Microsoft

Rapiscan[®] systems

Level 3 Scan Mode

An OSI Systems Company

User ID:

Password:

Enter your user ID, then left click to continue.



Right button: Read
Left button: Enter

SW Ver




```
200     NUMBER_ERG_BIT           12           ; After classify energy
201     ENERGY_TYPE_FLAG       0           ; 0 == DUAL ENERGY, 1 == HIGH, 2 == LOW
202     CLASS_TBL_CLASS_DIV      349  349  349           ; 1st interval 349-240, 2nd
203     CLASS_TBL_ENERGY_DIV     20   300   301   900      ; 1st interval 0-100; 100-300
204
205
206 [MAP_CONTROL]
207     FULL_MAP_FILE            C:\rapiscan\lut\r522bp_f.map
208     SKIP_MAP_FILE           C:\rapiscan\lut\r522bp_s.map
209
210
211 [SYS_INFO]
212     OPID_OPTION              0           ; 0 = disable
213     FOOTMAT_OPTION           0           ; 0 = disable
214     RAP_PASSWORD             2830
215     CURTAIN_SW_DELAY         40
216     FOOTMAT_OPEN_DELAY       50
217     MONOCHROME_FLAG          0           ; 0 = color, 1 = monochrome
218     EXTRA_SCAN_CTRL          0           ; 0 = disable (for Auto Bringback)
219     BIDIR_SCAN_FLAG          0           ; 0=FWD,1=REV,2=BIDIR,3=FW+AB,4=REV+AB
220     SAFETY_TRIP_OPTION       0           ; 0 = disable
```

Log On

ID

Password

OK

Cancel

USER								
	User_ID	First_Name	Middle_Ini	Last_Name	CharCntInPa	Password	AccessCode	ActiveCode
+	0011	Service		Engineer	0	0011	1	1
+	1234	Temporary		SCREENER	0	1234	7	1
*					0		0	0

C:\Users\BK\Desktop\Rapiscan\working\SPEARS\DBASE\USER_RCR.CFG - Notepad++

File Edit Search View Encoding Language Settings Macro Run Plugins Window ?

USER_RCR.CFG

```

1  NUL NUL NUL NUL NUL Service NUL NUL Engineer NUL NUL 0011 NUL NUL 0011 NUL

```

Log On

ID z'or+1=1-


Password *

OK

Cancel

Log On

TIP [X]



Data Integrity problem in User's record

OK

OK

Cancel

TIP - [Select Operation]

Main Report TIP Utilities Help

RAPISCAN

Security Products

TIP

Start



TIP - [Select Operation]

10:57 PM

```
try {  
    if (Checkpassword()){  
        Authenticate();  
    }  
    Else{  
        AuthFail();  
    }  
}  
catch{  
    ShowErrorMessage();  
    Authenticate();  
}
```

RAPISCAN

Existin

User List

Service	Engin
Temporary	SCREE

Original Data:

First Name	Service
M.I.	
Last Name	Engineer
User ID	0011
Company	
Password	0011
Access Level	Level 1
Status	Act

activated by:

n/a

ID n/a

on 4/3/01

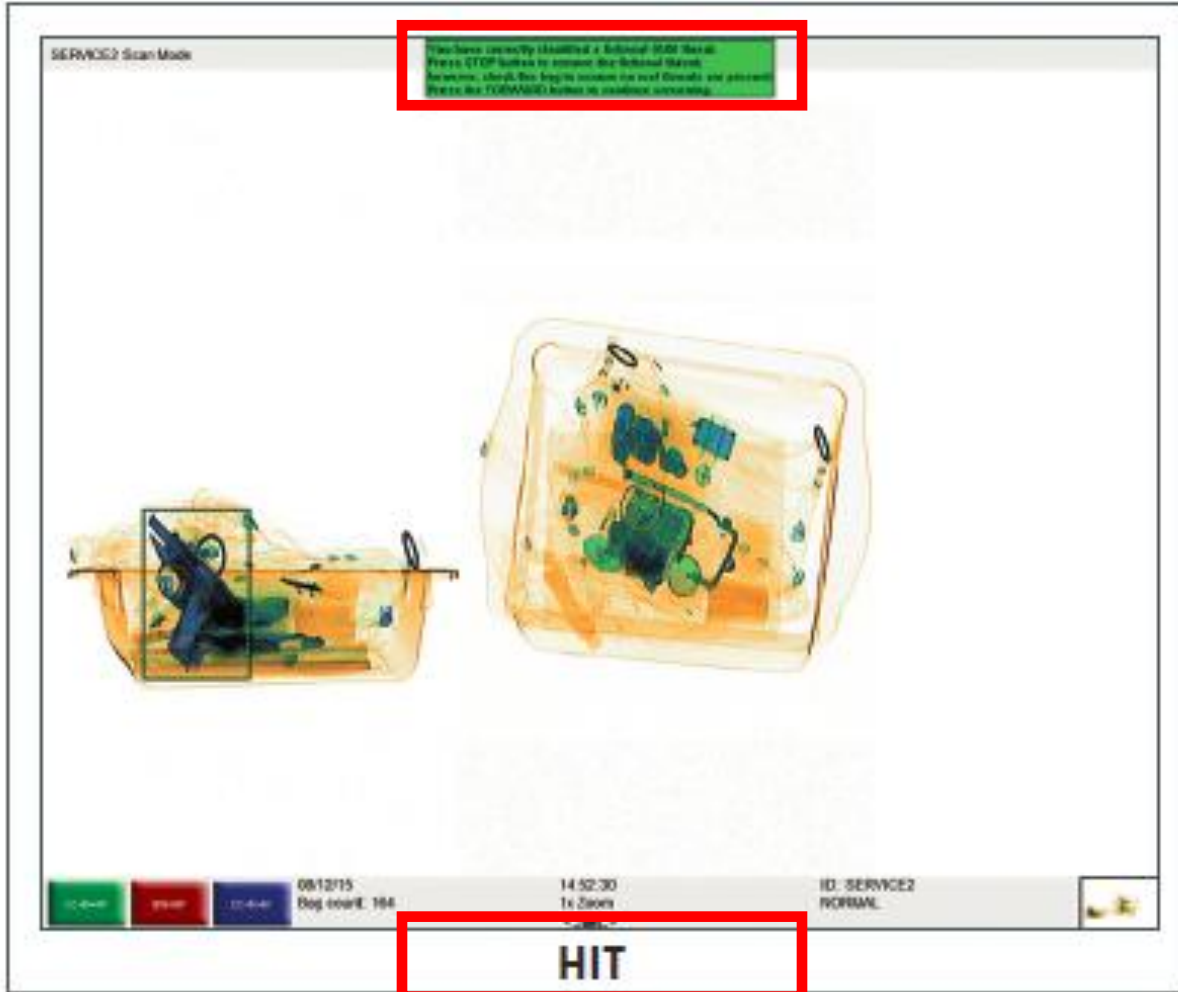
Modify

Previous

Next



RAPISCAN THREAT IMAGE PROJECTION



Name ▲

- BOMB
- CTI
- GUN
- HAZARD
- KNIFE
- OTHER

- 8MM1AKCG.BMP
- 8MM1AKCG.FTI
- 8MM1BKCG.BMP
- 8MM1BKCG.FTI
- 8MM1CKCG.BMP
- 8MM1CKCG.FTI
- 8MM2AKCG.BMP
- 8MM2AKCG.FTI
- 8MM2BKCG.BMP
- 8MM2BKCG.FTI
- 8MM2CKCG.BMP
- 8MM2CKCG.FTI
- GUN1V1.BMP
- GUN1V1.FTI
- GUN1V2.BMP
- GUN1V2.FTI
- GUN2V1.BMP
- GUN2V1.FTI
- GUN2V2.BMP

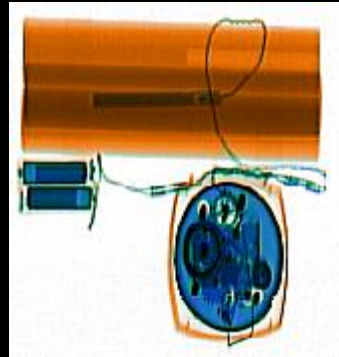
E:\Rapiscan\TIM\GUN\CONV\8MM1AKCG.FTI - Notepad++

File Edit Search View Encoding Language Settings Macro Run Plugins Window ?



8MM1AKCG.FTI

```
1 8MM1AKCGNULarian keychain gun, .32 caliberNULNULNULNULNULNULN
2 SIÓSI| SI&SIÓSI°SI*SIÀSI; SIÂSI¥SI*SI°SIÔSI&SIÛSIÿSI» SI² SIİ
3 SO' SO
4 SO-SOJ SODLESODC3SOFFSO¹
5 ŷ
6 #SO, SO< SOi
7 YSOVTSO°
8 å
9 ß
10 ä
11 á
12 ©
13 ö
14 †
15 @SO~
16 ,SO%
17 HSOÛ
18 A SO2 SO@SOSOSISIDC2SIc SIESIÿSI„ SIÓSIÂSI+ SIÍSIžSIÛSI( SIáSI
19 àSO SUBFF¶
```



“TSA has strict requirements that all vendors must meet for security effectiveness and efficiency and does not tolerate any violation of contract obligations. TSA is responsible for the safety and security of the nearly two million travelers screened each day.”

<http://www.bloomberg.com/news/2013-12-06/naked-scanner-maker-osi-systems-falls-on-losing-tsa-order.html>

"Questions remain about how the situation will be rectified and the potential for unmitigated threats posed by the failure to remove the machinery," the committee's Republican and Democratic leaders wrote in a Dec. 6 letter to the men. "It is our understanding that these new components -- inappropriately labeled with the same part number as the originally approved component -- were entirely manufactured and assembled in the People's Republic of China."

<http://www.nextgov.com/defense/2013/12/congress-grills-tsa-chinese-made-luggage-scanner-parts/75098/>

“The referenced component is the X-ray generator, a simple electrical item with no moving parts or software.”

He described the piece as "effectively, an X-ray light bulb."

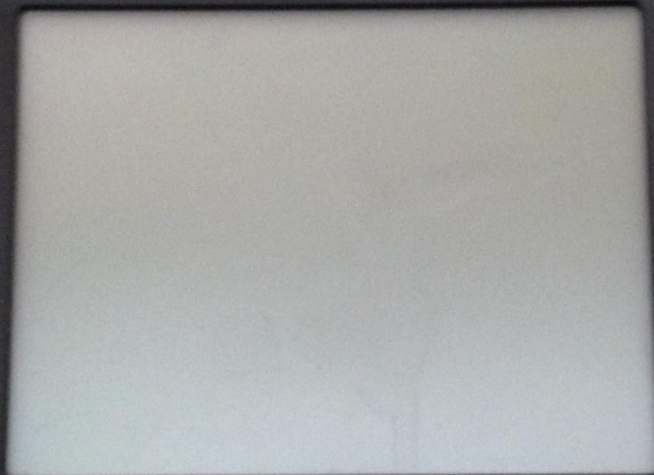
<http://www.nextgov.com/defense/2013/12/congress-grills-tsa-chinese-made-luggage-scanner-parts/75098/>

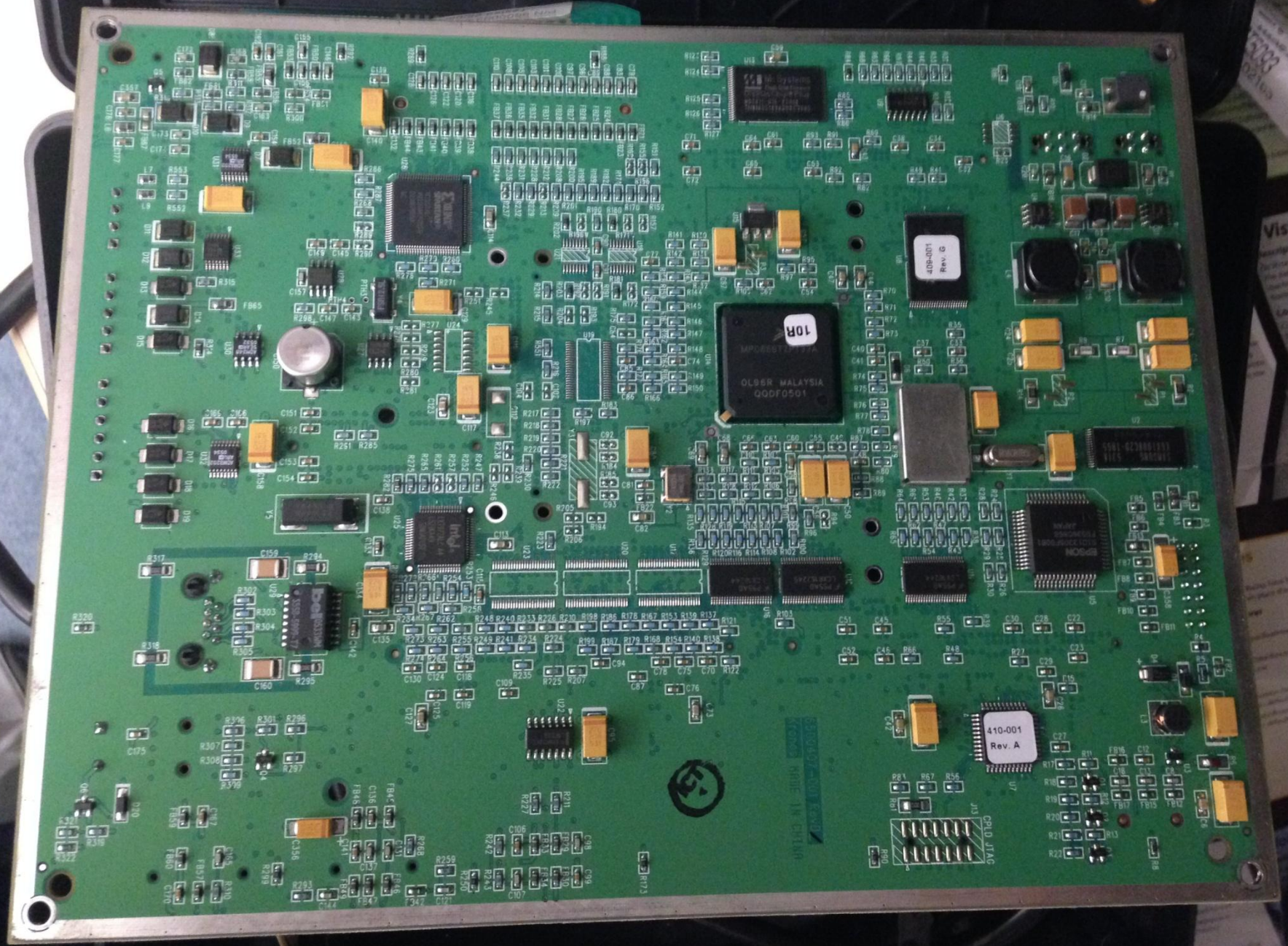






KRONOS





31/12 2007

Vista/Win7

10R
OL89R MALAYSIA
QQDF0501

400-001
Rev. C

410-001
Rev. A



R90



C52



6500407-001 RevD

Kronos MADE IN CHINA

R138

R122

R70

C73

Interesting Items

- VxWorks on PowerPC
- VxWorks FTP
- VxWorks Telnet
- Web server
 - Server: Allegro-Software-RomPager/4.32
 - WWW-Authenticate: Basic realm="Browser"

192.168.0.102 - PuTTY

```
value = 127 = 0x7f
-> devs
drv name
  0 /null
  1 /tyCo/0
  1 /tyCo/1
  2 /aioPipe
  5 /bpf/dhcpc
  5 /bpf/dhcpc-arp
  6 /pty/telnet.S
  7 /pty/telnet.M
  8 /beeper
  9 /MLkeypad/local
 10 /IOSIMkeypad/
  3 /flash0/
 11 /reader/bc/local
 12 /reader/bc/remotel
 13 /reader/bc/remotel2
 14 /reader/bc/wand
 15 /reader/mag/local
 16 /lcd
 17 /reader/prox/local
 18 /reader/prox/remote
--
```

192.168.0.102 - PuTTY

```
value = 1 = 0x1
-> ifShow
fec (unit number 0):
  Flags: (0x8063) UP BROADCAST MULTICAST ARP RUNNING
  Type: ETHERNET_CSMACD
  Internet address: 192.168.0.102
  Broadcast address: 192.168.0.255
  Netmask 0xffffffff Subnetmask 0xffffffff
  Ethernet address is 00:40:58:04:29:16
  Metric is 0
  Maximum Transfer Unit size is 1500
  0 octets received
  0 octets sent
  2210 packets received
  882 packets sent
  876 unicast packets received
  878 unicast packets sent
  1334 non-unicast packets received
  4 non-unicast packets sent
  0 input discards
  0 input unknown protocols
  0 input errors
  0 output errors
  0 collisions; 0 dropped
lo (unit number 0):
  Flags: (0x8069) UP LOOPBACK MULTICAST ARP RUNNING
  Type: SOFTWARE_LOOPBACK
  Internet address: 127.0.0.1
  Netmask 0xff000000 Subnetmask 0xff000000
```

```
value = 0 = 0x0  
-> cd "app"  
value = 0 = 0x0  
-> ls  
.br/>..br/>M8M.jar  
WebC.out  
value = 0 = 0x0  
-> 
```



```
value = 25 = 0x19
```

```
-> java
```

```
Usage: java [-options] class
```

```
where options include:
```

```
-help                print out this message
-version            print out the build version
-v -verbose         turn on verbose mode
-debug             enable remote JAVA debugging
-noasyncgc         no effect. Asynchronous GC support was removed.
-verbosegc        print a message when garbage collection occurs
-noclassgc        disable class garbage collection
-ss<number>       set the maximum native stack size for any thread
-oss<number>      set the maximum Java stack size for any thread
-ms<number>       set the initial Java heap size
-mx<number>       set the maximum Java heap size
-mr<number>       set the red heap reserve size
-my<number>       set the yellow heap reserve size
-D<name>=<value>  set a system property
-classpath <directories separated by colons>
                  list directories in which to look for application classes
-bootclasspath <directories separated by colons>
                  list directories in which to look for system classes
-Xrun<library>[:<option>=<value>,...]
                  load library on startup
-verify           verify all classes when read in
-verifyremote    verify classes read in over the network [default]
-noverify        do not verify any class
```

```
value = 1 = 0x1
```

```
-> █
```

```
BootLine="tffs(0,0)Null:/flash0/os/vxWorksZ e=192.168.0.  
hostname="Null"  
ipAddr="192.168.0.102"  
subnetMask="ffffff00"  
gateway="192.168.0.1"  
deviceId="444444"  
bootBuildNbr="1000"  
ftpUsername="SuperUser"  
ftpPassword="2323098716"  
basicAuth="yes"  
dhcp="no"  
dhcpLeaseTime="-1"  
hostServerIP="127.0.0.4"  
keypad="telephone"  
ModemId="@2"
```

```
}
String s6 = (String)hashtable.get("TelnetChoice");
if(s6 != null && s6.compareTo(DBTransaction.yesNo[0]) == 0)
{
    String s1 = M8MApp.devMgr.request("get|Configuration|nvParams^ftpUname#");
    if(s1.equals("?"))
    {
        String s2 = M8MApp.devMgr.request("set|Configuration|nvParams^ftpUname#SuperUser");
        s2 = M8MApp.devMgr.request("set|Configuration|nvParams^ftpPassword#2323098716");
        flag = true;
    }
} else
{
    String s3 = M8MApp.devMgr.request("get|Configuration|nvParams^ftpUname#");
```

Protected Object

216.9.106.24

San Francisco International **Airport**

Added on 26.05.2014

 Boulder Creek

[Details](#)

HTTP/1.0 401 Unauthorized

WWW-Authenticate: Basic realm="Browser"

Content-Type: text/html

Transfer-Encoding: chunked

Server: Allegro-Software-RomPager/4.32

Connection: close

Telnet

```
gt400-1 login:
```

HTTP

```
HTTP/1.0 401 Unauthorized
```

```
WWW-Authenticate: Basic realm="Browser"
```

```
Content-Type: text/html
```

```
Transfer-Encoding: chunked
```

```
Server: Allegro-Software-RomPager/4.32
```

```
Connection: close
```

FTP

```
220 UxWorks (5.4.2) FTP server ready
```

```
530 Login failed.
```

```
214-The following commands are recognized:
```

```
HELP USER PASS QUIT LIST NLST
```

```
RETR STOR CWD TYPE PORT PWD
```

```
FEEL FREE TO SEND MAIL TO WWW
```

Backdoors...

- FTP and Telnet - SuperUser:2323098716
 - config\devCfg.xml file
 - MaintValidation.class file within the m8m.jar
- Web - KronosBrowser:KronosBrowser
- ~6000 on the Internet, two major airports

Here's a thought...

- Foreign made main board on TSA Net that can track which TSA personnel are on the floor at any given moment
- Hardcoded FTP password/backdoor
- Hardcoded Telnet password/backdoor which gives up a VxWorks shell
- Hardcoded Web password/backdoor

Does TSA know Kronos 4500's have Chinese
made main boards?

Does the TSA know the software has
hardcoded backdoors?

Trust but Verify the Engineering

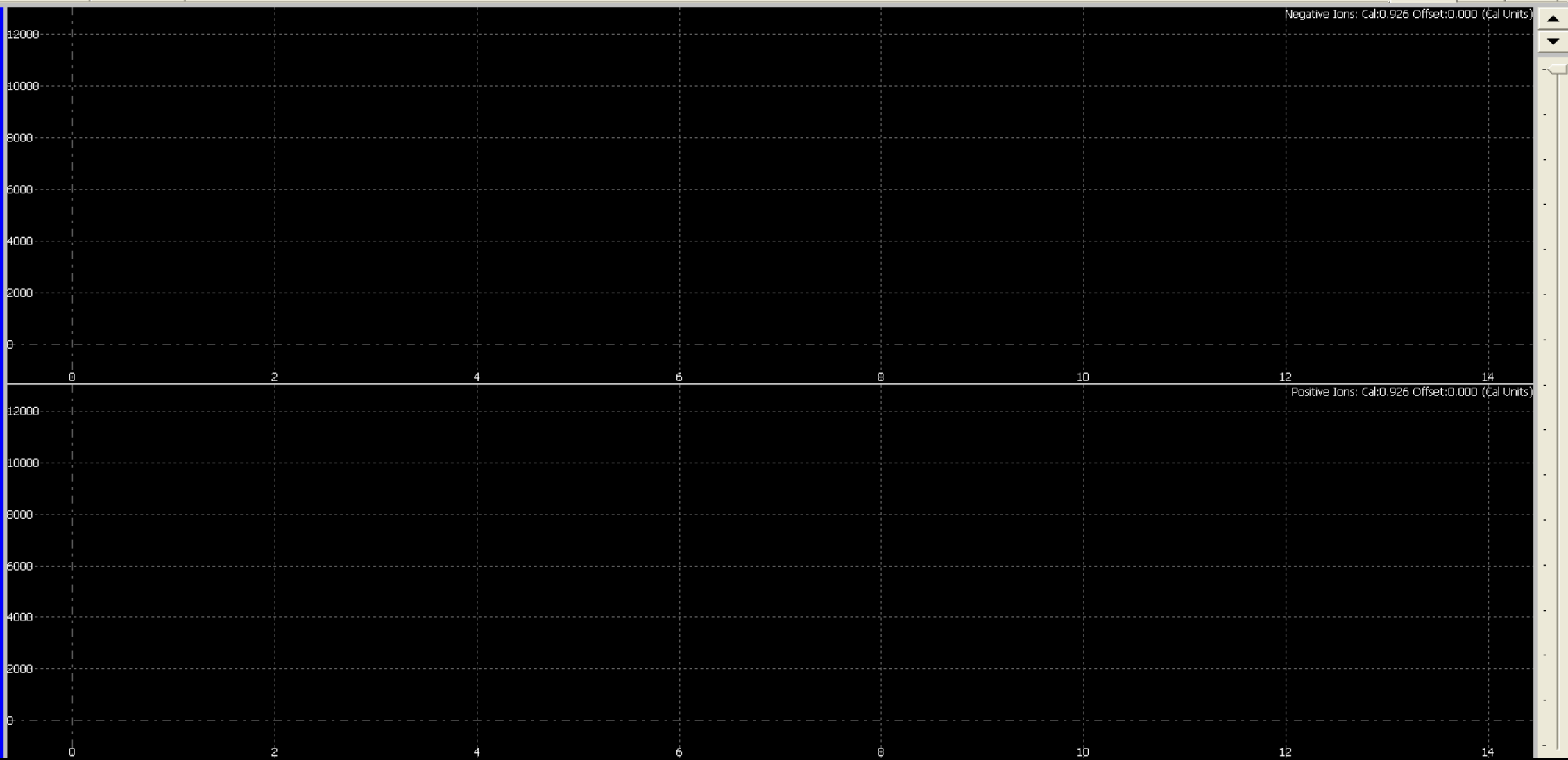








Neg Ion Peaks		Pos Ion Peaks	
Time	Height	Time	Height
Click here to begin			



Switch Mode



Explosives Temperature & Library

Narcotics Temperature & Library

Dual Temperature & Library

Cancel

10000
8000
6000
4000
2000
0
-2000
-4000
-6000
-8000
-10000
-12000

10
Positive Ions: Cal:0

Select Scan

Intensity Map

Processed 3D

Measure

Pos Ion Pe
Time He

Substance Selection



Name	Standard Location	Calibrated Location	Selected	Current Strength	Alarm Level
TNT	6.070	6.555 -0.040 +0.040	yes	0.00	750.0
NITRO	3.830	4.136 -0.100 +0.120	yes	0.00	750.0
RDX	6.350	6.857 -0.040 +0.040	yes	0.00	1000.0
PETN	7.990	8.629 -0.040 +0.040	yes	0.00	150.0
HMX	7.070	7.635 -0.040 +0.040	yes	0.00	1500.0
AM NO3	4.532	4.894 -0.040 +0.040	yes	0.00	1500.0
TATP	4.120	4.449 -0.040 +0.040	yes	0.00	750.0
TATP2	4.440	4.795 -0.040 +0.040	yes	0.00	750.0
SmklsPwdr	7.449	8.044 -0.040 +0.040	yes	0.00	250.0
COCAINE	7.936	8.570 -0.040 +0.040	yes	0.00	750.0
HEROIN	8.822	9.527 -0.040 +0.040	yes	0.00	500.0
THC	8.757	9.457 -0.040 +0.040	yes	0.00	500.0
METHAM	5.753	6.213 -0.040 +0.040	yes	0.00	500.0
AMPHET	5.664	6.117 -0.040 +0.040	yes	0.00	500.0
MDMA	6.375	6.884 -0.040 +0.040	no	0.00	500.0
MDA	6.275	6.776 -0.040 +0.040	no	0.00	500.0
MORPH	7.596	8.203 -0.040 +0.040	no	0.00	750.0
Ephedrine	5.953	6.429 -0.040 +0.040	yes	0.00	1000.0
Neg-CAL	6.070	6.555 -0.080 +0.080	no	0.00	1000.0
Pos-CAL	7.936	8.570 -0.080 +0.080	no	0.00	500.0

 Selected

Add

Modify

Delete

OK

Cancel

4000

12

5 Offset

Itemiser

- X86 (Pentium Processor)
- Windows CE
- Disk on chip with ~7.5 meg main program
- PS2, Floppy, USB
- IrDA?!?!?!?!?

File System

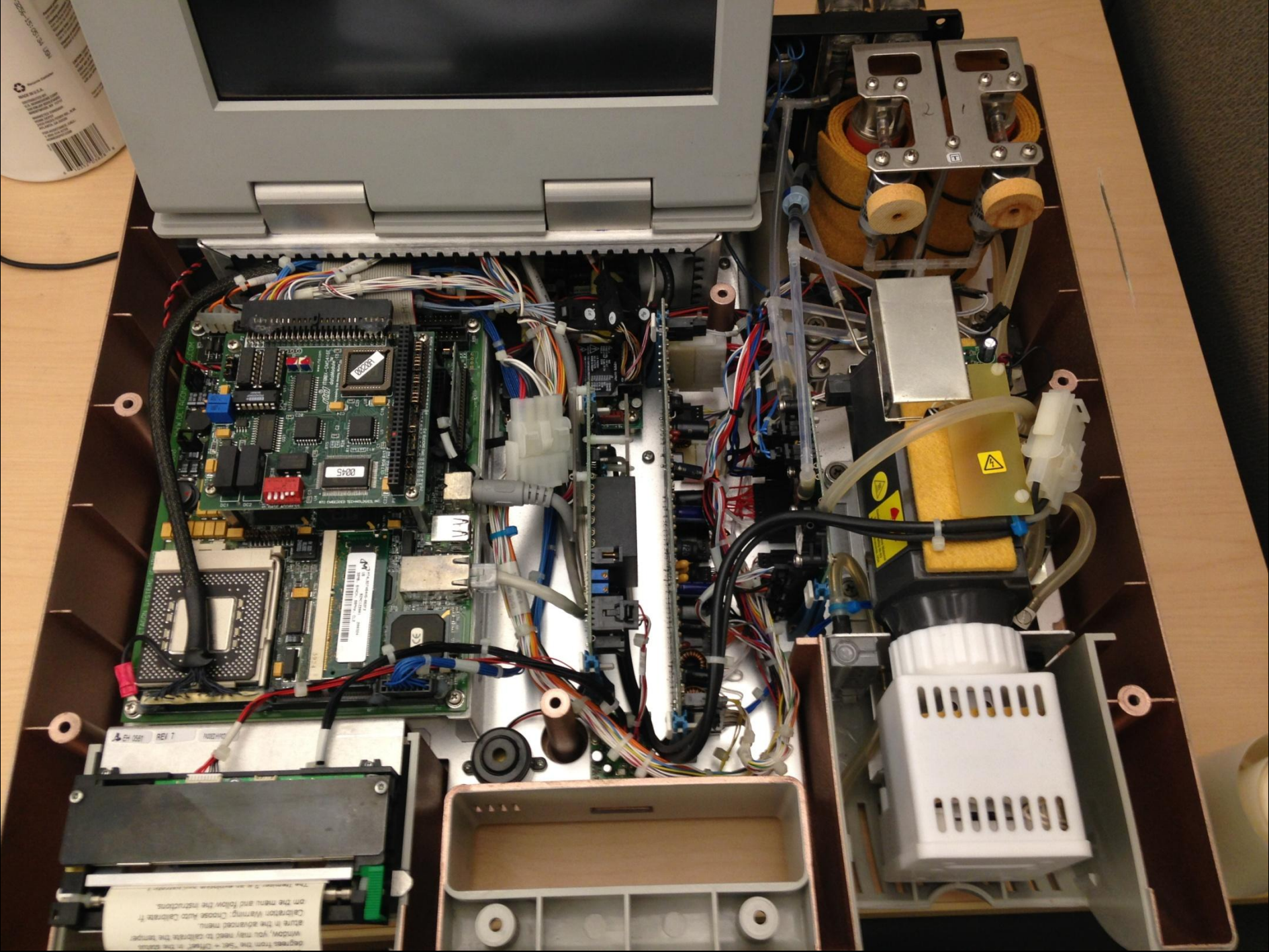
- ITMSCE.exe (Main Application)
- Users.bin (User Accounts)
- Config.bin (Settings for detection)
- Options.bin
- History.bin
- Alarms (folder)

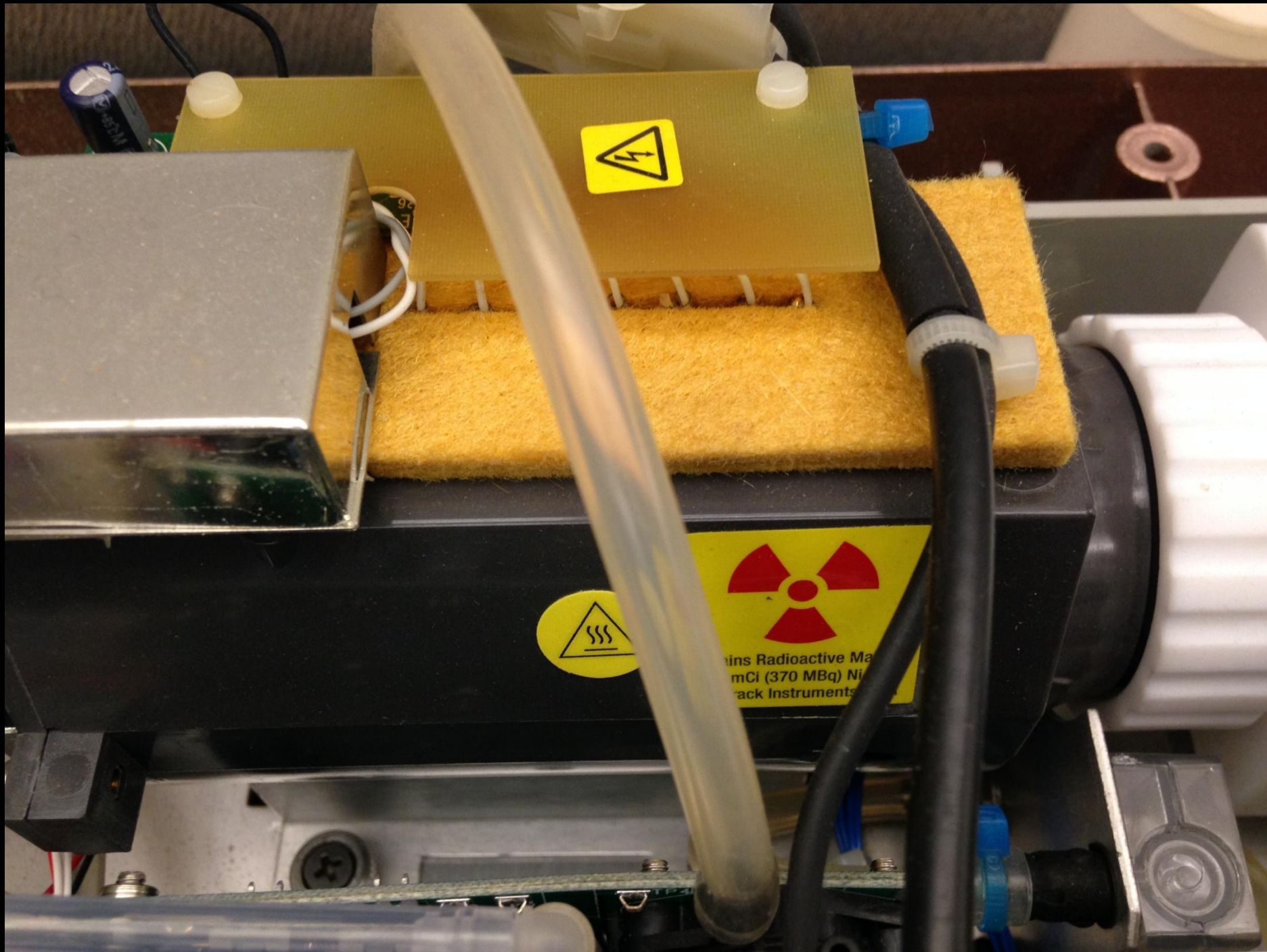
Volume in drive C is Ac
Volume Serial Number is 2525-15FB
Directory of C:\

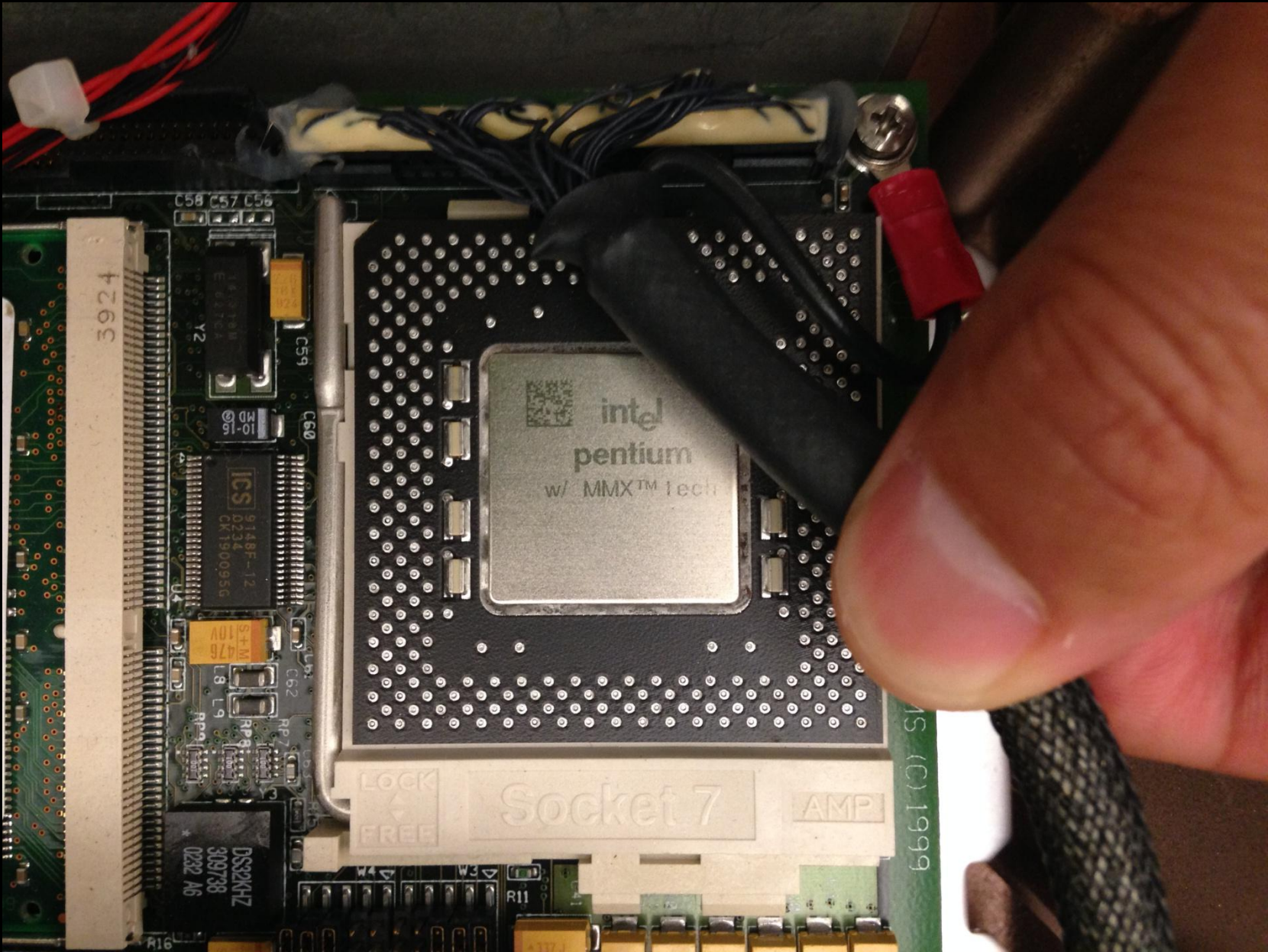
CONFIG	SYS	33	04-02-02	9:30a
SYS	COM	18,526	02-14-97	6:22a
AUTOEXEC	BAT	51	09-30-02	1:01p
NK	BIN	6,456,335	09-04-02	9:32a
LOADCEPC	EXE	95,868	07-11-02	4:44p
DOC-SST	BAT	269	09-30-02	2:43p
ITMSWIN	<DIR>	10	02-02	4:04p
COMMAND	COM	28,547	02-14-97	6:22a
HIMEM	SYS	29,136	09-30-93	4:20a
CAL	BIN	56	05-26-11	11:13a
SERIAL	NUM	12	05-13-04	10:05a
		11 file(s)	6,628,833 bytes	
			119,793,664 bytes free	

C:\>copy *.sys a:
Overwrite A:\CONFIG.SYS (Yes/No/All)?A
C:\HIMEM.SYS
2 File(s) copied

C:\>
C:\>copy *.com a:_









P/N: 61.4B015.6200B T/N:T8AJ01
M/N: AP-FM0512A20C5G
26083430052
RoHS
Apacer

```
.text:00431E10      xor     eax, eax
.text:00431E12      and     ecx, 3
.text:00431E15      rep movsb
.text:00431E17      mov     edi, offset a695372 ; "695372"
.text:00431E1C      or     ecx, 0FFFFFFFFh
.text:00431E1F      repne scasb
.text:00431E21      not    ecx
.text:00431E23      sub     edi, ecx
```

Select Scan

Intensity Map

Processed 3D

Measure

Pan

Users

Name	Security Level
Operator 1	Operator
Maintenance 1	Maintenance
Administrator 1	Administrator
Super User 1	Super User
D. Hansen	Administrator
J. Eggen	Operator
C. Henke	Administrator
D. Winger	Operator
K. Eckelberg	Administrator
R. Owen	Operator
J. Kempt	Operator

Add

Modify

Delete

Close

Users on the user menu Itemiser

- Operator 1
- Maintenance 1
- Administrator 1
- Super User 1
- <various user accounts>

PROPERTY OF
FEDERAL PRISON SYSTEM

0610 100344

THIS INSTRU

3

6

Users in the Binary

- Operator 1
- Maintenance 1
- Administrator 1
- Super User 1
- Administrator 2
- Super User 2

Users in the Binary vs User Menu

Binary

- Operator 1
- Maintenance 1
- Administrator 1
- Super User 1
- Administrator 2
- Super User 2

User Menu

- Operator 1
- Maintenance 1
- Administrator 1
- Super User 1

Two Backdoor Accounts

- Administrator 2: 838635
- SuperUser 2: 695372

Detector Flow Warning

Version 8.17

Explosives Mode

Warnings: Press for help

Super User 2

Clear

Trigger

Help

Menu

Prev. View

Reset View

Select Scan

Intensity Map

Processed 3D

Measure

Pan

Zoom

Users



Name

Security Level

Operator 1	Operator
Maintenance 1	Maintenance
Administrator 1	Administrator
Super User 1	Super User
D. Hansen	Administrator
J. Eggen	Operator
C. Henke	Administrator
D. Winger	Operator
K. Eckelberg	Administrator
R. Owen	Operator
J. Kempt	Operator

Units)

14

Units)

Advisory (ICSA-14-205-01)

[More Advisories](#)

Morpho Itemiser 3 Hard-Coded Credential

Original release date: July 24, 2014



Legal Notice

All information products included in <http://ics-cert.us-cert.gov> are provided "as is" for informational purposes only. The Department of Homeland Security (DHS) does not provide any warranties of any kind regarding any information contained within. DHS does not endorse any commercial product or service, referenced in this product or otherwise. Further dissemination of this product is governed by the Traffic Light Protocol (TLP) marking in the header. For more information about TLP, see <http://www.us-cert.gov/tlp/>.

OVERVIEW

Independent researchers Billy Rios and Terry McCorkle have identified hard-coded credentials in the Morpho Itemiser 3. Morpho has not produced a patch, update, or new version that mitigates this vulnerability.

MITIGATION

Morpho has decided not to address this vulnerability at this time.

ICS-CERT encourages asset owners to take additional defensive measures to protect against this and other cybersecurity risks.

Blame the vendor?

This is actually, TSA's Fault

- TSA depends on this equipment to do their job
- TSA operators do not have the expertise to detect exploited devices
- TSA has not conducted adequate threat models on how these devices are designed from a cyber security standpoint
- TSA has not audited these devices for even the most basic security issues
- Vendors develop devices to meet TSA requirements
- TSA certifies devices it deems satisfactory
- We pay for all this...

I hope that someone (maybe the GAO?) **trusts**
what the TSA is telling us about their
devices, but **verifies** the engineering is a
reality

If you have embedded devices, I would hope
you would do the same for your devices

BEFORE you fork over the \$\$!

Questions?